

**SABS**  
ISO 9001



HV MOTORS

LV MOTORS

LV PUMPS

BWC PUMPS

DC MOTORS

TRACTION MOTORS

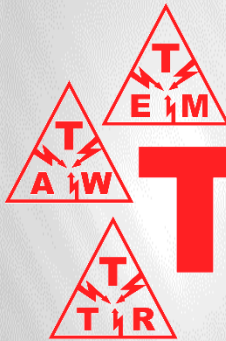
TRANSFORMERS

MINI-SUBS

MAGNETS

GENERATORS

ON SITE SERVICES

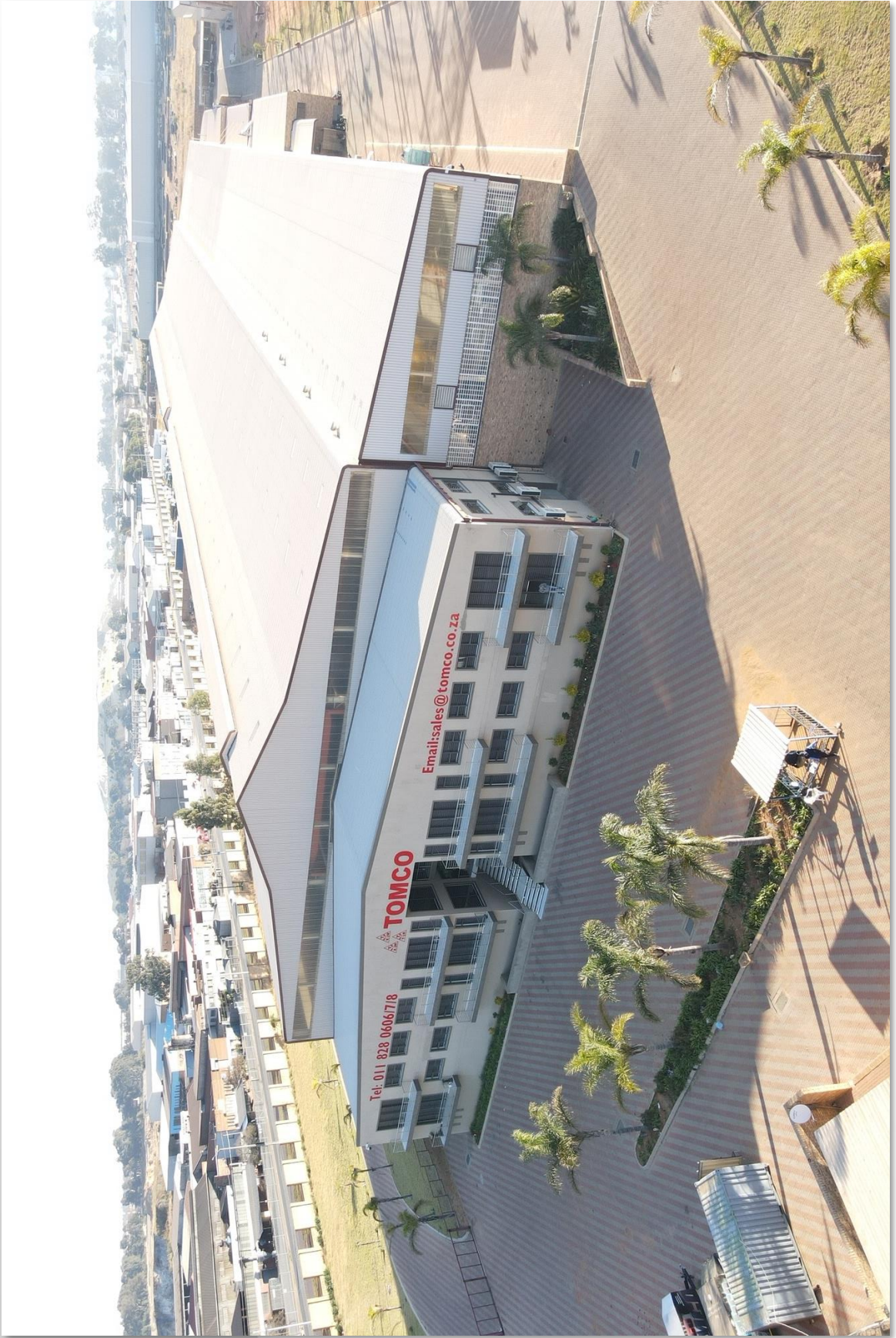


# TOMCO

## COMPANY PROFILE



010 200 9318 011 828 0606 /7/8/9  
sales@tomco.co.za www.tomco.co.za



# ABOUT US

- 1976 Tomco Armature Winders cc
- 2000 Tomco Electrical And Mechanical Engineering (Pty) Ltd
- 2011 Tomco Transformer Repairs & Sales (Pty) Ltd

Tomco specialises in refurbishing and rewinding of AC Motors, DC Motors, HV Motors, Pumps, Transformers, Generators, Crane Magnets, Welding machines and On-Site Services including Oil Purification. Tomco also supplies new units as per customer requirements.

The company has a full range of equipment and facilities, which ensures that majority of all work undertaken is carried out in-house

The experience and facilities enable the company to provide quality products and service to their customers

Tomco has a collect and delivery service to most parts of the country allowing a

## 24 HOUR, 7 DAY WEEK EMERGENCY REPAIR SERVICE

The aim of their service and on-site services is to provide their customer with an understanding of the operational conditions of their electrical machinery

To reduce the cost of planned and unplanned maintenance in order to prolong the operating life of their customer's electrical machinery and increase plant availability, productivity and profitability

## MISSION STATEMENT

Leadership Through Quality, Service & Commitment

## OUR COMMITMENT

- Quality Conscious
- Competitive Pricing
- Health and Safety
- Environmental
- Social Responsibility

## WARRANTY

A Tomco warranty is issued for a period of **1 year** from date of invoice as follows:

- Complete rewind & Mechanical repairs : Fully Warranted
- Partial Rewind : Portion of winding that was rewound only & Mechanical repairs
- Service units : Labour & New Parts supplied only

## AGENCIES HELD

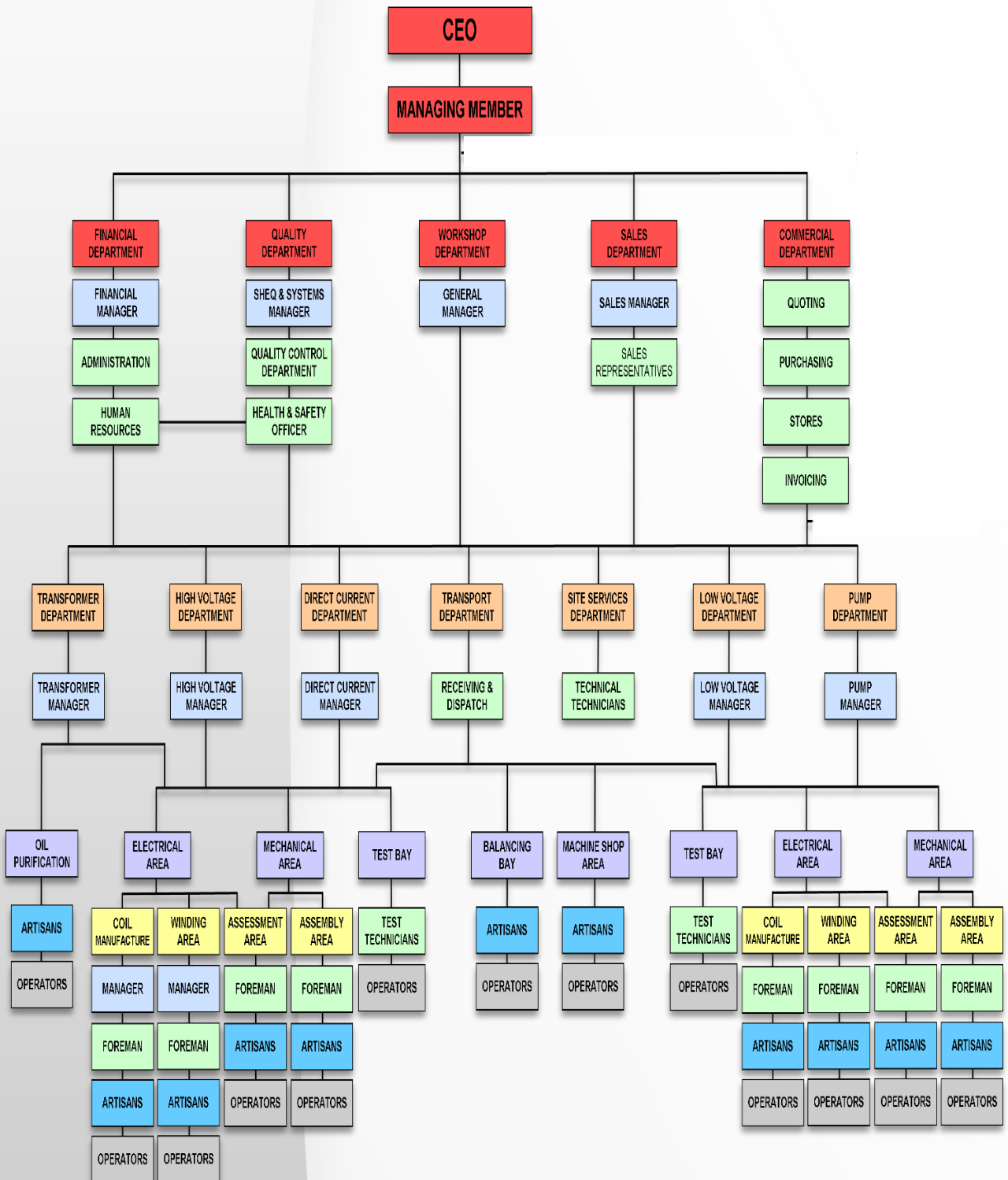


Official Repair Agent for  
Boiler Water Circulating Pumps for SA



Authorised Repair Shop

# ORGANISATIONAL CHART



ALL LEVELS COMMUNICATE UP AND DOWN WITH EACH OTHER AND TO MANAGING MEMBER & CEO THROUGH THE DEPARTMENT HEADS

# CONTACT DETAILS

CHIEF EXECUTIVE OFFICER	ODYSSEAS GIOKOS	083-680-0302	odyg@tomco.co.za
MANAGING MEMBER	KOSTA GIOKOS	083-680-0304	kostag@tomco.co.za
COMMERCIAL DIRECTOR	RACHEL KGAPANA	011-828-0606	rachelk@tomco.co.za
PROCUREMENT DIRECTOR	CHANTEL EDWARDS	011-828-0606	chantele@tomco.co.za
PRODUCTION MANAGER	JACQUES VERWEY	083-680-0809	jacquesv@tomco.co.za
HIGH VOLTAGE MANAGER	JUAN PARKER	083-680-0815	juanp@tomco.co.za
COMMERCIAL MANAGER	CHANTELL BRIEL	011-828-0606	chantelb@tomco.co.za
HV COMMERCIAL	ALEXANDROS KYRIAKIDES	083-680-0807	alexandrosk@tomco.co.za
HIGH VOLTAGE PLANNER	KAREL MYNHARDT	011-828-0606	karelm@tomco.co.za
LOW VOLTAGE MANAGER	GIDEON BESTER	072-507-0481	gideonb@tomco.co.za
TRANSFORMER MANAGER	FREDDIE KRUGER	083-680-0810	freddiek@tomco.co.za
TRANSFORMER COMMERCIAL	CARLA BOTHA	011-828-0606	carlab@tomco.co.za
PUMP MANAGER	MORNAY DUNBAR	011-828-0606	mornayd@tomco.co.za
MACHINE SHOP MANAGER	CARLOS GALINGHO	011-828-0606	karelm@tomco.co.za
FIELD SERVICES COORDINATOR	JANDRE STRYDOM	079-527-5256	hvfieldservice@tomco.co.za
SHEQ MANAGER	ASHLEY LISHER	011-828-0606	ashleyl@tomco.co.za
QC CONTROLLER	SHANE DUNBAR	011-828-0606	qc@tomco.co.za
SALES MANAGER	MARTIN JANKOWITZ	083-680-0808	martinj@tomco.co.za
SALES REPRESENTATIVE	CHRIS BARNARD	083-680-0806	chrisb@tomco.co.za
SALES REPRESENTATIVE	FREDDY VAN DEN BERGH	083-680-0816	freddyv@tomco.co.za
SALES REPRESENTATIVE	TREVOR RHEEDER	083-680-0814	trevorr@tomco.co.za
SALES REPRESENTATIVE	JOHANN VAN WYK	072-845-4726	johannv@tomco.co.za
SALES REPRESENTATIVE	STEVEN KGAPANA	079-494-0672	stevenk@tomco.co.za
SALES GROUP MAIL			sales@tomco.co.za
ACCOUNTS GROUP MAIL			accounts@tomco.co.za

# BEE CERTIFICATE

## LEVEL 1 B-BBEE CONTRIBUTOR



EVA 274

**BEE TRANSFORMATION SOLUTIONS (PTY) LTD**  
**TEL NR: 063 336 8349**  
**ADDRESS: MIDLANDS OFFICE PARK WEST, 1<sup>ST</sup> FLOOR,**  
**MOUNT QUARY DRIVE, MIDLANDS ESTATE, MIDSTREAM 1692**

In accordance with the Codes of Good Practice issued in terms of Section 9(1) of the Broad Based-Black Economic Empowerment Act, 2003 (act 53 of 2003 as amended 27 January 2014) and the Codes Good Practice as amended

### *B-BBEE Verification Certificate*

## TOMCO ELECTRICAL AND MECHANICAL ENGINEERING (PTY) LTD

<b>CERTIFICATE No:</b>	BTS23/03/04 Gen
<b>TYPE OF ENTITY:</b>	Private Company
<b>REGISTRATION NUMBER:</b>	2000/003113/07
<b>VAT REGISTRATION:</b>	40902054 12
<b>HEAD OFFICE LOCATION:</b>	Cnr Homestead and Main Road, Knights, Germiston, 1401
<b>FINANCIAL PERIOD:</b>	1 March 2021 – 28 February 2022
<b>APPLICABLE CRITERIA:</b>	B-BBEE Codes of Good Practice as amended
<b>SCORECARD APPLIED:</b>	Generic (≥ R50 Million annual turnover)

Element	Element Weighting	Score
Ownership	25	25
Management Control	19	9.49
Skills Development	25	20.39
Enterprise and Supplier Development	46	40.42
Socio-Economic Development	5	5
<b>Total Score</b>	<b>120</b>	<b>100.30</b>

<b>Broad-Based BEE status level:</b>	<b>A level ONE</b> contributor to B-BBEE
<b>BEE procurement recognition:</b>	135%
<b>Discounting Principle Applicable</b>	(No) <b>Black Ownership: 51%</b>
<b>Modified Flow Through Applied</b>	(No) <b>Black Female Ownership: 51%</b>
<b>Exclusion Principle Applied</b>	(No) <b>Black New Entrant : 51%</b>
<b>Empowering Supplier:</b>	(Yes) <b>Black Designated Group: 25.5%</b>
<b>Y.E.S. participation</b>	(No) <b>Black Youth: 0%</b>
<b>Achieve Y.E.S Target and 2.5% Absorption</b>	(No) <b>Black Disabled: 25.5%</b>
<b>Achieve 1.5x Y.E.S Target and 5% Absorption</b>	(No) <b>Black Unemployed: 0%</b>
<b>Achieve 2x Y.E.S Target and 5% Absorption</b>	(No) <b>Black People living in rural areas: 0%</b>
	<b>Black Military Veterans: 0%</b>

**ISSUE DATE: 17 March 2023      EXPIRY DATE: 16 March 2024      PERIOD OF VALIDITY: 12 MONTHS**  
**REVISION DATE: N/A**

  
**TECHNICAL SIGNATORY**  
**ANTONETTE GROENEWALD**



# ENTERPRISE & SUPPLIER DEVELOPMENT

TOMCO has implemented leading practices in Enterprise and Supplier Development (ESD) across their core functional areas. This initiative promotes economic transformation through developing entrepreneurs and suppliers and creating competitive markets for them to generate more jobs and establish sustainable communities.

Tomco is committed to creating opportunities for black owned suppliers and black entrepreneurs to encourage economic growth in the country through their operations and other ventures. Tomco leverages their purchasing power, internal and external capabilities to deliver sustained stakeholder value.

# SOCIAL ECONOMIC DEVELOPMENT

TOMCO's Social Economic Development (SED) strategy is about empowering communities within their areas with resources, support and skills that ultimately lead to better lives.

Tomco aims to become a benchmark of effective SED within their industry by ensuring impact and sustainability of community initiatives.



# CUSTOMER BASE

A FEW OF OUR CUSTOMERS





# CORE SERVICES

## HIGH VOLTAGE DEPARTMENT

### REPAIR

- High and Medium Voltage AC Motors up to 15MW
- Balancing Capabilities up to 12½Ton
- VPI Plant 2.8m x 3.5m - Sterling resin

### COILS

- Set Diamond Coils up to 15MW
- Hairpin Coils
- Rotor Rebar
- Rotor Rewind - Mush / Bar Wound
- All Electrical Testing to SABS/IEC Standards and Customer specifications

### TEST

- No load test capabilities on MV motors up to 11 000V
- Synchronous Induction - Unity & Zero Power Factor
- Bar Continuity
- Tan Delta Testing
- Electromagnetic Core Imperfection Detection (El Cid)
- Efficiency testing program designed by Henry Du Preez in conjunction with Tomco's Power Analysing equipment
- Pressure Testing (Old windings by request only)
- Routine Testing to SABS/IEC Standards and Customer specifications

### CAPACITY

- **65 Motors Per Month**

### TURN AROUND TIMES

From receipt of official order

- **Normal : 4 - 6 weeks**
- **Breakdown : 72hrs - 3 weeks \***

\*Depending on scope of work



# CORE SERVICES

## LOW VOLTAGE DEPARTMENT

### REPAIR

- Low Voltage AC Motors up to 1MW
- Voltage range from 220V to 1000V
- Scraper Winch motors
- Vibrator motors
- Salient Pole rotors
- Balancing Capabilities up to 12½Ton

### TEST

- Testing capabilities 450kW
- Dynamometer load testing up to 350 kW
- Insulation Resistance Testing
- High Voltage Withstand Testing
- Interturn Testing - RISATTI
- Rotor Bar Testing
- Stator / Rotor Core Testing
- Coil Reversal Testing
- Vibration Testing
- No Load – Phase Balance Testing
- Locked Rotor Current Balance Test
- No Load Bearing Temperature Test
- Load Test of Motor (On customer request only)
- Routine Testing to SABS/IEC Standards and Customer specifications

### CAPACITY

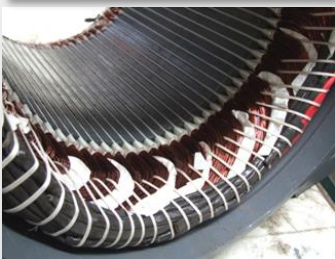
- **1000 Motors Per Month**

### TURN AROUND TIMES

From receipt of official order

- **Normal : 5 - 10 days**
- **Breakdown : 24 - 72 hrs \***

\*Depending on scope of work



# CORE SERVICES

## LOW VOLTAGE PUMP DEPARTMENT

### REPAIR

- All types of Submersible pumps up to 350kW
- Centrifugal Pumps up to 250kW
- Multistage Centrifugal Pumps up to 8 stage
- Balancing Capabilities up to 12½Ton

### TEST

- Testing based on KW vs HYDRAULICS
- Station capable of testing up to 300CM<sup>3</sup> p/h on 200mm pipe
- Based on 3 different sizes of electromagnetic flow meters, namely: 50mm / 100mm / 200mm pipe
- Software to work out Friction Loss, the Flow and the Head has been measured on different pipe sizes and calibrated by KSB Pump Engineers to give an accurate reading of the performance of the pump
- The print outs give all information regarding the test namely: Head, Flow and Performance
- The Tests are performed on 5 different readings:
  - Valve just cracked,
  - Valve opened at 75%/50%/25%/completely open
- Routine Testing to SABS/IEC Standards and Customer specifications

### CAPACITY

- **50 Pumps** Per Month

### TURN AROUND TIMES

From receipt of official order

- **Normal** : 5 - 10 days
- **Breakdown** : 24 - 72 hrs \*

\*Depending on scope of work



# CORE SERVICES

## DIRECT CURRENT DEPARTMENT



### REPAIR

- DC and Winder Motors up to 10MW
- All types of Traction Motors
- Generators
- Alternators
- Welding Machines
- Balancing Capabilities up to 12½Ton

### COILS

- Set Diamond Coils up to 10MW
- Hairpin Coils
- Rotor Rebar
- Rotor Rewind
- All Electrical Testing

### TEST

- No Load testing capabilities up to 10MW
- Load Testing up to 300kW, 4 to 6 pole
- Back to Back Load Testing of Loco Motors
- Routine Testing to SABS/IEC Standards and Customer specifications

### CAPACITY

- **50 Motors Per Month**

### TURN AROUND TIMES

From receipt of official order

- **Normal : 2 - 5 weeks**
- **Breakdown : 1 - 2 weeks \***

\*Depending on scope of work

# CORE SERVICES

## TRANSFORMER DEPARTMENT



### MANUFACTURE

- Transformers up to 15 MVA
- Mini-substations up to 1250 KVA
- Power & distribution transformers
- Oil type transformers & mini-substations
- Dry type transformers & mini-substations
- Reactors
- New tanks
- Active Part

### REPAIR

- Transformers up to 15 MVA
- Mini-substations up to 1250 KVA
- Power & distribution transformers
- Oil type transformers & mini-substations
- Dry type transformers & mini-substations
- Reactors
- Electromagnets - Overhead and Conveyor
- Complete rewinding of coils
- Repair / renewal of damaged components
- Drying of active part
- Shot blast & paint

### TEST

- Test Capability Up To 15MVA
- Mini-Substations up to 1250KVA
- Routine Testing to SABS/IEC Standards and customer specifications

### CAPACITY

- **40 Transformers Per Month**

### TURN AROUND TIMES

From receipt of official order

- **Normal : 2 - 5 weeks**
- **Breakdown : 1 - 3 weeks \***

\*Depending on scope of work



# CORE SERVICES

## TRANSFORMER ON SITE SERVICES

### ON SITE SERVICES AND TESTING

- Repair Gaskets
- Repair Oil Leaks
- Purify Oil
- Limited Modifications
- Oil Sampling

Routine testing to SABS/IEC Standards and Customer Specifications

### ON SITE OIL PURIFICATION SYSTEMS

- Purification system designed for use with all lubricating oils

#### Features:

- Rapid removal of all water, gasses & acids & High efficiency demulsifying properties

#### Principles of operation:

- Wet or emulsified oil is drawn into the System under vacuum
- The first chamber is a quiet zone; leading to thermostat controlled heaters and from there, into the vacuum separator under negative pressure, low humidity conditions
- This provides the ideal environment to quickly and effectively evaporate dissolved water and gasses
- All vapours and gasses enter into the chiller / condensation unit and are released into the water receiver
- Cleaner, dryer oil is passed back to the oil tank

Dependant on volume of water contamination, multiple passes will be required to achieve target dehydration levels

# CORE SERVICES

## MACHINE SHOP DEPARTMENT



### 1 VERTICAL BORING MILL

- Height: 400mm x Table Diameter: 1250mm

### 4 HORIZONTAL BORING MILL

- Table Size : 1.6m x 1.8m ± 8Ton
- Table Size : 1.5m x 1.8m ± 4Ton
- Table Size : 2.0m x 1.8m ± 8Ton
- Table Size : 1.0m x 1.25m ± 8Ton

### 9 METAL LATHES

- Length between centers 4000mm Swing 800mm
- Length between centers 3930mm Swing 1200mm
- Length between centers 3000mm Swing 660mm
- Length between centers 2000mm Swing 500mm
- Length between centers 2000mm Swing 720mm
- Length between centers 2000mm Swing 580mm
- Length between centers 1900mm Swing 500mm
- Length between centers 1700mm Swing 1000mm
- Length between centers 1500mm Swing 500mm

### 4 MILLING MACHINES

- Working Area: 1500mm x Table Width: 550mm
- Working Area: 1400mm x Table Width: 350mm
- Working Area: 1300mm x Table Width: 300mm
- Working Area: 1100mm x Table Width: 300mm

### 2 RADIAL ARM DRILLS

- 1m Travel x 1m Height 50mm  $\Phi$  Drill
- 1m Travel x 1m Height 50mm  $\Phi$  Drill

### 2 PRESSERS

- Horizontal : 1.4m Width x 5m Length 300Ton
- Vertical : 3.0m Height x 1.5m 100Ton

**Key slotter**

**Pedestal Drills**

**Micro welding Plant**

**Boiler making and Fabrication**

**Concentricity Checks**

# CORE SERVICES

## SITE SERVICES DEPARTMENT

### SERVICES

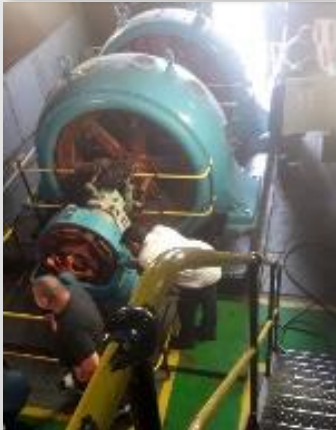
- On site problem solving - System Solutions
- Removal, Installation and Commissioning of motors and equipment
- Removal of white metal bearings for repairs or remetalling
- Laser Alignment
- Electrical and Mechanical Repairs
- On site Power Quality Analysis
- Dynamic Trim balancing
- Replacement of brushes on DC & Slipring motors
- Checking of brush gear - Neutral Point
- Undercut & Bevel Commutator
- Fault Finding
- Thermography
- Tribology

### ELECTRICAL TESTING

- Insulation Resistance (Megger)
  - Polarization Index (P.I.)
  - Winding Resistance
  - Interturn Test
  - Tan Delta Testing and Monitoring
- Routine Testing to SABS/IEC Standards and customer specifications

### MECHANICAL TESTING

- Bearing Temperature measurement
  - Vibration Analysis
- Routine Testing to SABS/IEC Standards and customer specifications





# RESOURCES



## FLOOR SPACE

11 000m<sup>2</sup> & 22 000m<sup>2</sup>

## CRAINAGE

- 6 x 1 Ton
- 7 x 5 Ton
- 7 x 10 Ton
- 1 x 15/5 Ton
- 3 x 20 Ton
- 1 x 25 Ton
- 2 x 35/15 Ton
- 2 x 40 Ton
- 1 x 65 Ton
- 1 x 75/15 Ton

## FORKLIFTS

- 1 X 2,5 Ton
- 1 X 8 Ton

## BURNOUT OVENS

7.5 Cubic meters  
Fitted with temperature  
controllers and recorders

## ELECTRIC CURING OVENS

- 1 X 6x4x4m
- 2 X 4x5x4m
- 1 X 2x3x2m
- Fitted with temperature  
controllers and recorders

## SANDBLASTING FACILITY

115 cubic meters

## VPI PLANT

1 X 2.8x3.5m Tank  
Sterling Resin

## BALANCING FACILITY

2 x Balancing Machines  
Capabilities up to 12½Ton

## TRANSPORTATION

- 8 x 1 Ton Toyota Hilux
- 2 x 5 Ton Toyota Hino
- 1 x 5 Ton Toyota Dyna
- 1 x 6 Ton Toyota Hino
- 1 x 8 Ton Toyota Hino
- 1 x 12 Ton Mercedes Benz - Crane
- 1 x 14 Ton Mercedes Benz
- 1 x 14 Ton Toyota Hino
- 1 x 15 Ton Mercedes - Wide Deck
- 1 x 17 Ton Scania - Flat Deck
- 1 x 36 Ton Scania - Low Bed  
Permit Required

# QUALITY ASSURANCE

## SABS

### Certificate of Registration

*This is to certify that the Quality Management System of*

**TOMCO ARMATURE WINDERS CC**  
Co Reg. 1988/032135/23  
GERMISTON

*has been assessed and found to satisfy the requirements of*

**ISO 9001:2015**  
QUALITY MANAGEMENT SYSTEMS - REQUIREMENTS

*in respect of*

**THE REWINDING AND REFURBISHING OF:**

- AC MOTORS (LOW VOLTAGE) 0.12 KW TO 1 MW
- AC MOTORS (HIGH VOLTAGE) UP TO 15 MW
- DC MOTORS UP TO 5 MW
- TRANSFORMERS UP TO 10 MVA

**NOT APPLICABLE CLAUSE:**

**8.3 DESIGN AND DEVELOPMENT OF PRODUCTS AND SERVICES**

The certificate (including the addenda) shall form an integral part of the product and shall be available to the client upon request. It shall be used in accordance with the conditions of use. It shall be used in accordance with the conditions of use. It shall be used in accordance with the conditions of use. It shall be used in accordance with the conditions of use.

Registration Number: **LS 1766**

Effective Date: **13 July 2022**

Expiry Date: **03 August 2025**

Date of Original Registration: **22 April 1996**

Chief Executive Officer:

Registration number: 2022/410870/07

**THIS PRODUCT CERTIFICATION PERMIT AUTHORIZES**

**TOMCO Electrical & Mechanical Engineering (Pty) Ltd.**

Company reg. Number: 2000/003113/07  
Homestead Rd, Primrose, Germiston, 1401, South Africa.

To apply the Product certification mark of EXCS, illustrated below,

to the "Repair/rewinding and refurbishing" of certified equipment in compliance with the requirements of the Product certification Agreement of EXCS and the requirements of the following standard specifications:

- SANS 10242-1: 2017 The rewinding and refurbishing of rotating electrical machines Part 1: Low-voltage three-phase induction motors

**PRODUCT CERTIFICATION PERMIT NUMBER: EXP011B**

This permit consists of the official Product certification permit (front page) and Annexure A - Scope of permit. This Product certification permit, including the Annexure A, which forms part of the official Product certification permit, applies to following conditions:

- ◆ The product certification permit & Annexure A, is issued without alteration
- ◆ It is identified by the applicable permit number
- ◆ It is only valid, subject to ongoing compliance with the permit conditions
- ◆ This permit may not be distributed without a copy of the front and valid Annexure A - Scope of permit, is accompanied.
- ◆ This Product certification permit may be authenticated by referring to the "Certified Clients" list on the website of Explolabs. ([www.explolabs.co.za](http://www.explolabs.co.za))

Effective Date: **17 July 2023**  
Expiry Date: **16 July 2026**  
Original registration date: **17 July 2023**

DIRECTOR

Explolabs Certification Services (Pty) Ltd. Reg. No. 2022/410870/07. Director: Simon Mkhabela. No. 7 Tugela Street, Germiston, Johannesburg, South Africa. Tel: 011 713 136 800 - Fax: 011 713 137 727. Website: [www.explolabs.co.za](http://www.explolabs.co.za) Email: [info@explolabs.co.za](mailto:info@explolabs.co.za)

Registration number: 2022/410870/07

**THIS PRODUCT CERTIFICATION PERMIT AUTHORIZES**

**TOMCO Electrical & Mechanical Engineering (Pty) Ltd.**

Company reg. Number: 2000/003113/07  
Homestead Rd, Primrose, Germiston, 1401, South Africa.

To apply the Product certification mark of EXCS, illustrated below,

to the "Repair/overhaul, conversions, & inspect" of certified equipment in compliance with the requirements of the Product certification Agreement of EXCS and the requirements of the following standard specifications:

- SANS 60079-0: 2019 Explosive atmospheres: Part 0: Equipment - General requirements
- SANS 60079-1: 2015 Explosive atmospheres: Part 1: Equipment protection by flameproof enclosures "d"
- SANS 60079-15: 2010 Explosive atmospheres: Part 15: Equipment protection by type of protection "m"
- SANS 60079-19: 2021 Explosive atmospheres: Part 19: Equipment repair, overhaul, and replacement
- SANS 60079-31: 2014 Explosive atmospheres: Part 31: Equipment dust ignition protection by enclosure "t"

**PRODUCT CERTIFICATION PERMIT NUMBER: EXP011A**

This permit consists of the official Product certification permit (front page) and Annexure A - Scope of permit. This Product certification permit, including the Annexure A, which forms part of the official Product certification permit, applies to following conditions:

- ◆ The product certification permit & Annexure A, is issued without alteration
- ◆ It is identified by the applicable permit number
- ◆ It is only valid, subject to ongoing compliance with the permit conditions
- ◆ This permit may not be distributed without a copy of the front and valid Annexure A - Scope of permit, is accompanied.
- ◆ This Product certification permit may be authenticated by referring to the "Certified Clients" list on the website of Explolabs. ([www.explolabs.co.za](http://www.explolabs.co.za))

Effective Date: **17 July 2023**  
Expiry Date: **16 July 2026**  
Original registration date: **17 July 2023**

DIRECTOR

Explolabs Certification Services (Pty) Ltd. Reg. No. 2022/410870/07. Director: Simon Mkhabela. No. 7 Tugela Street, Germiston, Johannesburg, South Africa. Tel: 011 713 136 800 - Fax: 011 713 137 727. Website: [www.explolabs.co.za](http://www.explolabs.co.za) Email: [info@explolabs.co.za](mailto:info@explolabs.co.za)

# COMPANY DETAILS

## PHYSICAL ADDRESSES

**CNR PIET & MAIN REEF ROADS**

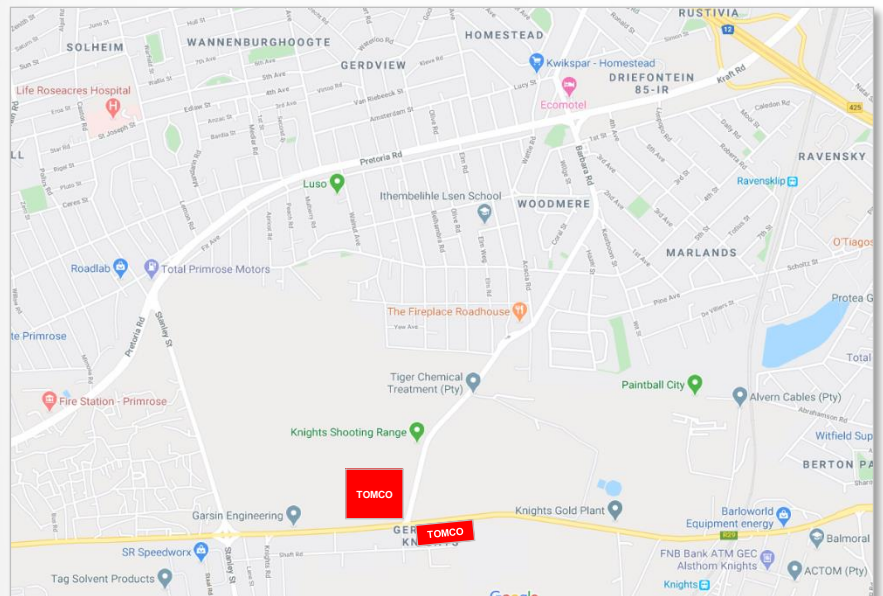
**KNIGHTS, GERMISTON**

**GPS Y: 28°18'34" X: -26°19'53"**

**CNR HOMESTEAD & MAIN REEF ROADS**

**KNIGHTS, GERMISTON**

**GPS Y: 28°18'27" X: -26°19'43"**



## POSTAL ADDRESS

**P O BOX 518**

**GERMISTON, 1400**

## CONTACT DETAILS

**010 200 9318**

**011 828 0606 /7/8/9**

**[sales@tomco.co.za](mailto:sales@tomco.co.za)**

**[www.tomco.co.za](http://www.tomco.co.za)**

**SABS**  
ISO 9001



HV MOTORS

LV MOTORS

LV PUMPS

BWC PUMPS

DC MOTORS

TRACTION MOTORS

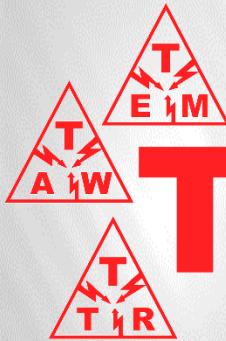
TRANSFORMERS

MINI-SUBS

MAGNETS

GENERATORS

ON SITE SERVICES



**TOMCO**



010 200 9318 011 828 0606 /7/8/9  
sales@tomco.co.za www.tomco.co.za