



TOMCO

REPAIRS TO:

HV MOTORS

LV MOTORS

LV PUMPS

BOILER WATER CIRCULATING PUMPS

DC MOTORS

TRACTION MOTORS

TRANSFORMERS

MINI-SUBS

MAGNETS

GENERATORS

ON SITE SERVICES

T: 011-828-0606

F: 011-828-0990

sales@tomco.co.za

www.tomco.co.za



About

History

- 1976 Tomco Armature Winders cc
- 2000 Tomco Electrical And Mechanical Engineering (Pty) Ltd
- 2011 Tomco Transformer Repairs & Sales (Pty) Ltd

The company has a full range of equipment and facilities, which ensures that the majority of all work undertaken is carried out in-house

The experience and facilities enable the company to provide quality products and service to our customers

Tomco has a "collect and delivery service" to most parts of the country allowing a

24 HOUR, 7 DAY WEEK EMERGENCY REPAIR SERVICE

The aim of our service and on site services is to provide our customer with an understanding of the operational conditions of their electrical machinery

To reduce the cost of planned and unplanned maintenance in order to prolong the operating life of our customer's electrical machinery and increase plant availability, productivity and profitability

Mission Statement

Leadership Through Quality, Service & Commitment

Our Commitment

- Quality Conscious
- Competitive Pricing
- Health and Safety
- Environmental
- Social Responsibility

Warranty

A Tomco warranty is issued for a period of **1 Year** from date of invoice as follows:

Complete rewind & Mechanical repairs : Fully Warranted

Partial Rewind : Portion of winding that was rewound only & Mechanical repairs

Service units : Labour & New Parts supplied only

Agencies Held



Official Service Centre for
Sub-Sahara Africa and Mauritius



Official Repair Agent for
Boiler Water Circulating Pumps for SA



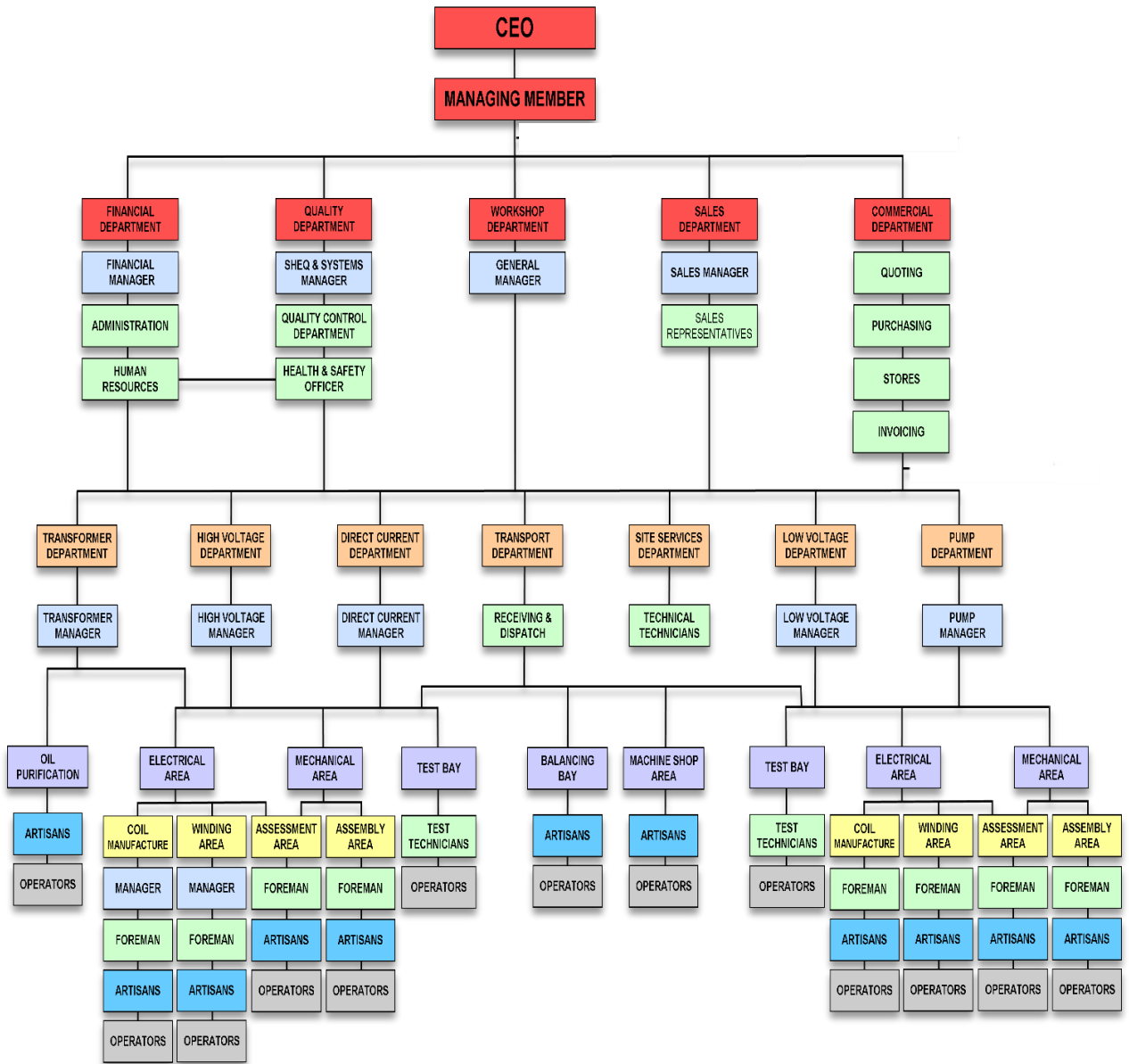
WEG Authorised
Repair Shop

Contact Details

CHIEF EXECUTIVE OFFICER	NICOLAS GOKOS	083-680-0300	nickg@tomco.co.za
MANAGING DIRECTOR	ODYSSEAS GOKOS	083-680-0302	odyg@tomco.co.za
COMMERCIAL DIRECTOR	RACHEL KGAPANA	011-828-0606	rachelk@tomco.co.za
PROCUREMENT DIRECTOR	CHANTEL EDWARDS	011-828-0606	chantele@tomco.co.za
GENERAL MANAGER	JACQUES VERWEY	083-680-0809	jacquesv@tomco.co.za
HIGH VOLTAGE MANAGER	JUAN PARKER	083-680-0815	juanp@tomco.co.za
COMMERCIAL MANAGER	CHANTELL BRIEL	011-828-0606	chantelb@tomco.co.za
HIGH/LOW VOLTAGE COMMERCIAL	KOSTA GOKOS	083-680-0302	kostag@tomco.co.za
HIGH VOLTAGE PLANNER	KAREL MYNHARDT	011-828-0606	karelm@tomco.co.za
LOW VOLTAGE MANAGER	EDWARD ALDERSON	072-507-0481	edwarda@tomco.co.za
TRANSFORMER MANAGER	FREDDIE KRUGER	083-680-0810	freddiek@tomco.co.za
TRANSFORMER COMMERCIAL	DIRK KOEGELENBERG	011-828-0606	dirkk@tomco.co.za
PUMP MANAGER	JOHAN KUNNEKE	011-828-0606	johank@tomco.co.za
MACHINE SHOP MANAGER	MIKE BROOKS	011-828-0606	mikeb@tomco.co.za
TECHNICAL MANAGER	JOHN GAJDUS	079-527-5256	johng@tomco.co.za
SITE SERVICES MANAGER	CRAIG PRETORIUS	079-527-5246	craigp@tomco.co.za
SHEQ MANAGER	ASHLEY LISHER	011-828-0606	ashleyl@tomco.co.za
SHEQ CONTROLLER	MORNAY DUNBAR	011-828-0606	mornayd@tomco.co.za
SALES REPRESENTATIVE	CHRIS BARNARD	083-680-0806	sales@tomco.co.za
SALES REPRESENTATIVE	TREVOR RHEEDER	083-680-0814	trevorr@tomco.co.za
SALES REPRESENTATIVE	MARTIN JANKOWITZ	083-680-0808	martinj@tomco.co.za
SALES REPRESENTATIVE	JOHANN VAN WYK	072-845-4726	johannv@tomco.co.za
SALES REPRESENTATIVE	FREDDY VAN DEN BERGH	083-680-0816	freddiev@tomco.co.za
SALES GROUP MAIL			sales@tomco.co.za
ACCOUNTS GROUP MAIL			accounts@tomco.co.za



Organisational Chart



ALL LEVELS COMMUNICATE UP AND DOWN WITH EACH OTHER AND TO MANAGING MEMBER & CEO THROUGH THE DEPARTMENT HEADS



Customer Base

A Few of Our Customers

 AfriSam	 ANGLOGOLD ASHANTI	 ANGLO COAL	 ANGLO PLATINUM
 ArcelorMittal	 COLUMBUS STAINLESS <small>(Pty) Ltd</small>	 DRDGOLD LIMITED	 Eskom
 exxaro	 FOSKOR	 GLENCORE	 GOLD FIELDS
 HARMONY	 LAFARGE	 LONMIN	 NORTHAM PLATINUM LIMITED
 prasa <small>PASSENGER RAIL AGENCY OF SOUTH AFRICA</small>	 RAND WATER	 samancor	 sappi
	 SibanyeGOLD	 we are one Sibanye Stillwater	



Core Services

HIGH VOLTAGE DEPARTMENT

- High & Medium AC Motors
- Repair To Motors Up To 15 MW
- Balancing Capabilities Up To 12½ Ton
- VPI Plant 2.8m x 3.5m - Sterling Resin
- Capacity of 50 motors per month
- Turn around times, from receipt of official order:
 - Normal : 4 - 6 weeks
 - Breakdown : 72 hrs - 3 weeks *

* Depending on scope of work



Core Services

HIGH VOLTAGE COIL DEPARTMENT

- Set Diamond Coils up to 15MW
- Hairpin Coils
- Rotor Rebar
- Rotor Rewind
- All Electrical Testing



HIGH VOLTAGE TEST DEPARTMENT

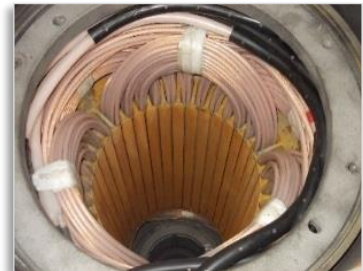
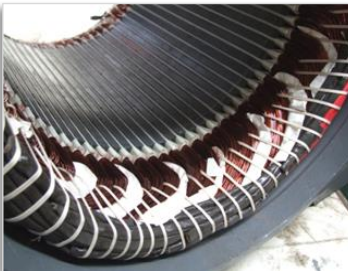
- No load test capabilities on all MV motors up to 11 000V
- Synchronous Induction motors - Unity & Zero Power Factor testing
- Bar Continuity testing
- Electromagnetic Core Imperfection Detection testing (El Cid)
- Efficiency testing program designed by Henry Du Preez in conjunction with Tomco's Power Analysing equipment



Core Services

LOW VOLTAGE MOTOR DEPARTMENT

- Repair LV AC Motors up to 1MW
 - Voltage range from 220V to 1000V
 - Scraper Winch motors
 - Vibrator motors
 - Saliant Pole rotors
 - Flameproof motors
 - Sparkproof motors
 - Dust Ignition Proof
 - Balancing capabilities up to 12½Ton
 - Capacity of **1000 motors** per month
 - Turn around times, from receipt of official order:
 - Normal : **5 - 10 days**
 - Breakdown : **24 - 72 hours** *
- * Depending on scope of work



Core Services

LOW VOLTAGE PUMP DEPARTMENT

- All types of Submersible pumps up to 350kW
 - Centrifugal pumps up to 250kW
 - Multi Stage Centrifugal Pumps up to 8 stage
 - Mechanical Pumps up to 350kW
 - Balancing capabilities up to 12½Ton
 - Capacity of **50 pumps** per month
 - Turn around times, from receipt of official order:
 - Normal : **5 - 10 days**
 - Breakdown : **24 - 72 hours** *
- * Depending on scope of work



LOW VOLTAGE PUMP STATION TESTING

- Testing based on KW vs HYDRAULICS
- Station capable of testing up to 300CM³ p/h on 200mm pipe
- Based on 3 different sizes of electromagnetic flow meters, namely: 50mm / 100mm / 200mm pipe
- Software to work out Friction Loss, the Flow and the Head has been measured on different pipe sizes and calibrated by KSB Pump Engineers to give an accurate reading of the performance of the pump
- The print outs give all information regarding the test namely: Head, Flow and Performance
- The Tests are performed on 5 different readings:
 - Valve just cracked,
 - Valve opened at 75%/50%/25%/completely open



Official Repair Agent for Hayward Tyler Boiler
Water Circulating Pumps in SA



Core Services

DIRECT CURRENT DEPARTMENT

- Repairs to all DC & Winder Motors up to 10MW
 - Traction Motors
 - Generators
 - Alternators
 - Electro Magnets
 - Welding Machines
 - Balancing Capabilities up to 12½ Ton
 - Capacity of **50 motors** per month
 - Turn around times, from receipt of official order:
 - Normal : **2 - 5 weeks**
 - Breakdown : **1 - 2 weeks** *
- * Depending on scope of work



Core Services

DIRECT CURRENT TRACTION MOTOR DEPARTMENT

- Repairs to all types of Traction Motors
- Balancing Capabilities up to 12½ Ton
- Capacity of **50 motors** per month
- Turn around times, from receipt of official order:
 - Normal : **2 - 5 weeks**
 - Breakdown : **1 - 2 weeks** *

* Depending on scope of work



Core Services

DIRECT CURRENT COIL DEPARTMENT

- Set Diamond Coils up to 10MW
- Hairpin Coils
- Rotor Rebar
- Rotor Rewind
- All Electrical Testing



DIRECT CURRENT TEST DEPARTMENT

- No Load Testing Capabilities up to 10MW
- Load Testing up to 300kw, 4 to 6 Pole
- Back To Back Load Testing of Loco Motors



Core Services

TRANSFORMER DEPARTMENT

- Repair & Manufacture Capability Up To 10MVA
- Oil Type
- Dry Type
- Mini-Sub Stations
- Electro Magnets
- Capacity of **40 transformers** per month
- Turn around times, from receipt of official order:
 - Normal : **2 - 5 weeks**
 - Breakdown : **1 - 3 weeks** *

* Depending on scope of work



TRANSFORMER TEST DEPARTMENT

- Test Capability Up To 10MVA
- Routine Testing in accordance with SANS 780



Core Services

ON SITE OIL PURIFICATION SYSTEMS

- Purification system designed for use with all lubricating oils

Features: Rapid removal of all water, gasses & acids & High efficiency demulsifying properties

Principles of operation:

- Wet or emulsified oil is drawn into the System under vacuum
- The first chamber is a quiet zone; leading to thermostat controlled heaters and from there, into the vacuum separator under negative pressure, low humidity conditions
- This provides the ideal environment to quickly and effectively evaporate dissolved water and gasses
- All vapours and gasses enter into the chiller / condensation unit and are released into the water receiver
- Cleaner, dryer oil is passed back to the oil tank
- Dependant on volume of water contamination, multiple passes will be required to achieve target dehydration levels

TRANSFORMER ON SITE SERVICES & TESTING

- Replace gaskets
- Repair Oil Leaks
- Purify Oil
- Limited Modifications
- Oil Sampling
- Ratio Test
- Megger Test
- Resistance Test



Core Services

MACHINE SHOP DEPARTMENT

- 3 Horizontal Boring Mill
- 6 Metal Lathes
- Milling Machines
- Boiler making and Fabrication
- Concentricity Checks



Core Services

SITE SERVICES DEPARTMENT

- On site problem solving - System Solutions
- Removal, Installation and Commissioning of motors and equipment
- Removal of white metal bearings for repairs or remetalling
- Laser Alignment
- Electrical and Mechanical Repairs
- On site Power Quality Analysis
- Dynamic Trim balancing
- Replacement of brushes on DC & Slipring motors
- Checking of brush gear - Neutral Point
- Undercut & Bevel Commutator
- Thermography
- Tribology

- **Electrical Testing:**
- Insulation Resistance (Megger) and Polarization Index (P.I.)
- Winding Resistance
- Interturn Test
- Tan Delta Testing and monitoring

- **Mechanical Testing:**
- Bearing Temperature measurement
- Vibration Analysis



Resources

FLOOR SPACE ■ 11 000m² & 25 000m²

- CRAINAGE** ■ 6 x 1 Ton
 ■ 7 x 5 Ton
 ■ 7 x 10 Ton
 ■ 1 x 15/5 Ton
 ■ 3 x 20 Ton
 ■ 1 x 25 Ton
 ■ 2 x 35/15 Ton
 ■ 2 x 40 Ton
 ■ 1 x 65 Ton
 ■ 1 x 75/15 Ton

- FORKLIFTS** ■ 1 X 2,5 Ton
 ■ 1 X 8 Ton

- BURNOUT OVENS** ■ 7.5 Cubic meters
 ■ Fitted with temperature controllers and recorders

- ELECTRIC CURING OVENS** ■ 1 X 6x4x4m
 ■ 2 X 4x5x4m
 ■ 1 X 2x3x2m
 ■ Fitted with temperature controllers and recorders

- SANDBLASTING FACILITY** ■ 115 cubic meters

- VPI PLANT** ■ 1 X 2.8x3.5m Tank
 ■ Sterling Resin

- BALANCING FACILITY** ■ 2 x Balancing Machines
 ■ Balancing capabilities up to 12½Ton

- TRANSPORTATION** ■ 8 x 1 Ton Toyota Hilux
 ■ 3 x 5 Ton Toyota Dyna
 ■ 1 x 6 Ton Toyota Hino
 ■ 1 x 8 Ton Toyota Hino
 ■ 1 x 12 Ton Mercedes Benz
 ■ 1 x 14 Ton Mercedes Benz
 ■ 1 x 17 Ton Flat Deck
 ■ 1 x 20 Ton Low Bed
 ■ 1 x 40 Ton Low Bed

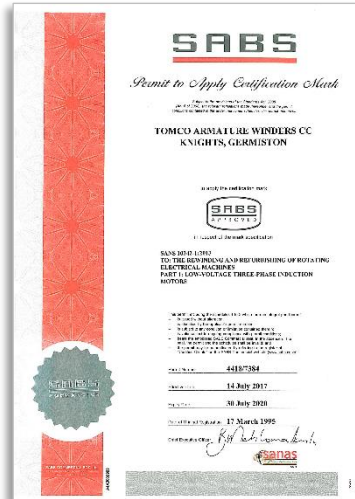


Quality Assurance

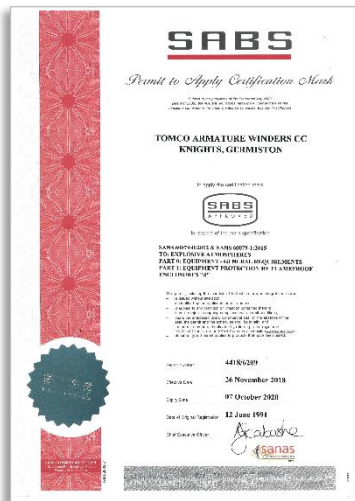
ISO 9001
Registered Since
22-04-1996



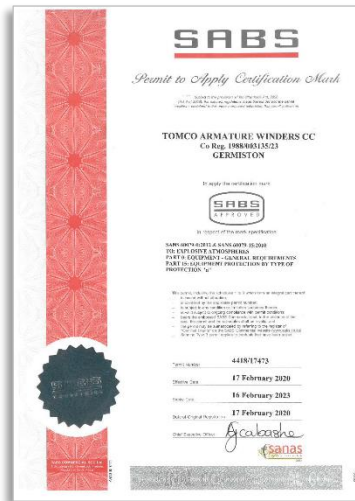
SANS 10242-1
Registered Since
17-03-1995



SANS 60079-1
Registered Since
12-06-1991




SANS 60079-0 & 60079-15
Registered Since
12-06-1991



BEE Certificate

LEVEL 2 CONTRIBUTOR



**Broad-Based Black Economic Empowerment
Verification Certificate**

TOMCO ELECTRICAL & MECHANICAL ENGINEERING PTY LTD

Certificate No:01/B-BBEE/2020/00039/GEN

Registration no: 2000/003113/07
 VAT no: 4090205412
 Head Office, Location: 306 Main Reef Road
 Knight, Germiston, Gauteng
 1401
 P.O.Box 518
 Germiston
 1400


Verification standard applied: DTI Codes of Good Practice on Black Economic Empowerment
 Issue of the rating standard applied: Section 9 of the B-BBEE Amendment Act 46 of 2013
 Scorecard applied: Generic Large Enterprise (>R50 million)
 Financial year rated: 2019

Element	Element weighting	Score
Ownership	25	25,00
Management Control	19	8,65
Skills Development	20	15,60
Enterprise and Supplier Development	40	41,18
Socio-Economic Development	5	5,00
Y.E.S Initiative Bonus Points		0,00
Overall Score	109	95,43

Broad Based BEE status level : A level TWO contributor to B-BBEE
BEE procurement recognition level : 125%
Black Ownership : 51,00%
Black Women Ownership : 51,00%
Empowering Supplier : YES
Designated Group Supplier : NO
Y.E.S Initiative Applied : NO


This verification certificate and verification report is based on information provided to Amax BEE Verifications and represent an independent opinion based on the verification and analysis completed by Amax BEE Verifications. The calculation of the scores has been determined in accordance with the DTI Codes of Good Practice on Black Economic Empowerment as Gazetted.

Amax BEE Verifications (Pty) Ltd Reg: 2014/267853/07
 Director: GP Stols



Gerhard Stols (Technical Signatory)
 For Amax BEE Verifications (Pty) Ltd
 tel: 012 546 7248 | fax: 086 672 5709
 260 Jack Hindon Street | Pretoria North | 0182
 PO Box 16949 | Pretoria North | 0116

Date of issue: 9 March 2020
 Expiry date: 8 March 2021
 Period of validity: 12 Months



BBBEE Verification Agency
 BVA 195



ADDRESS

PHYSICAL

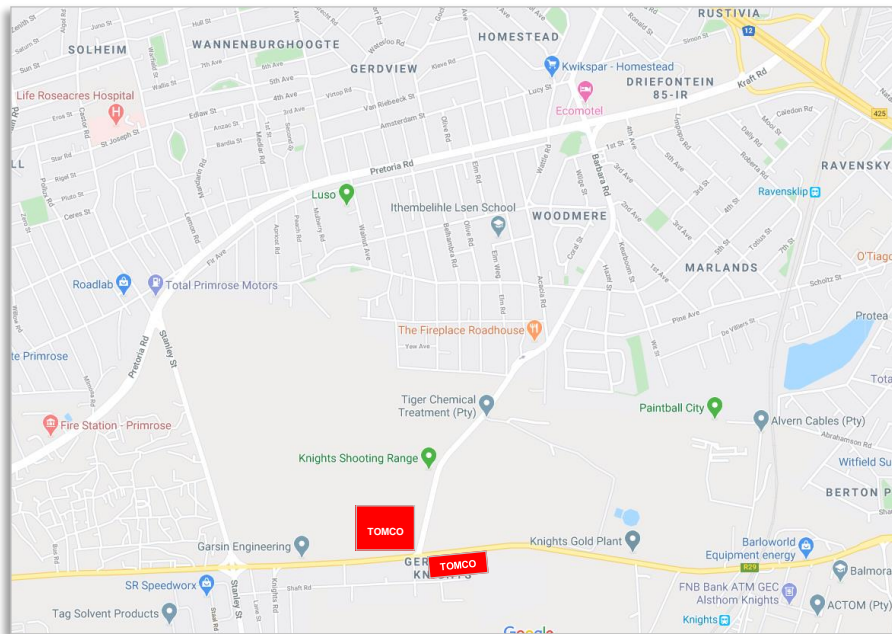
- CNR PIET STREET & MAIN REEF ROAD
KNIGHTS
GERMISTON

POSTAL

- P O BOX 518
GERMISTON
1400

GPS COORDINATES

- Y: 28°10'56" X: -26°11'43"





ΤΟΜΣΟ